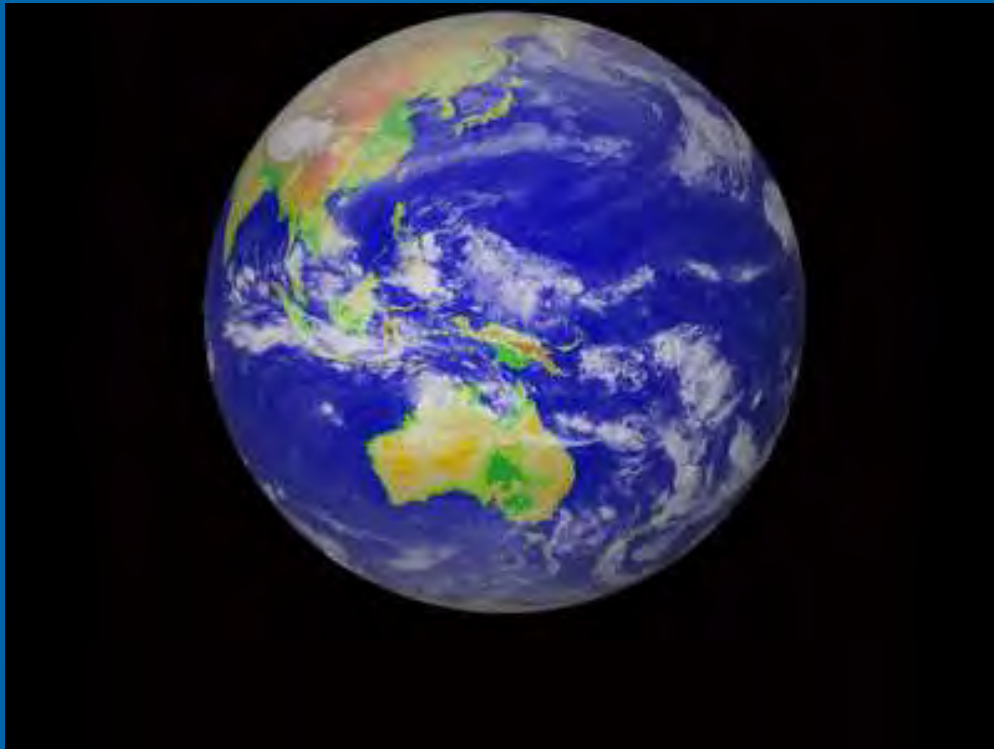


# Why study at Monash University?

# AUSTRALIA

- **Capital:** Canberra
- **Population:** 23 million people
- Sixth largest nation after Russia, Canada, China, US and Brazil





# ICONS



# AUSTRALIAN INVENTIONS



**GOOGLE MAPS – 2003**



**WIFI – Early 90's**



# AUSTRALIAN INVENTIONS

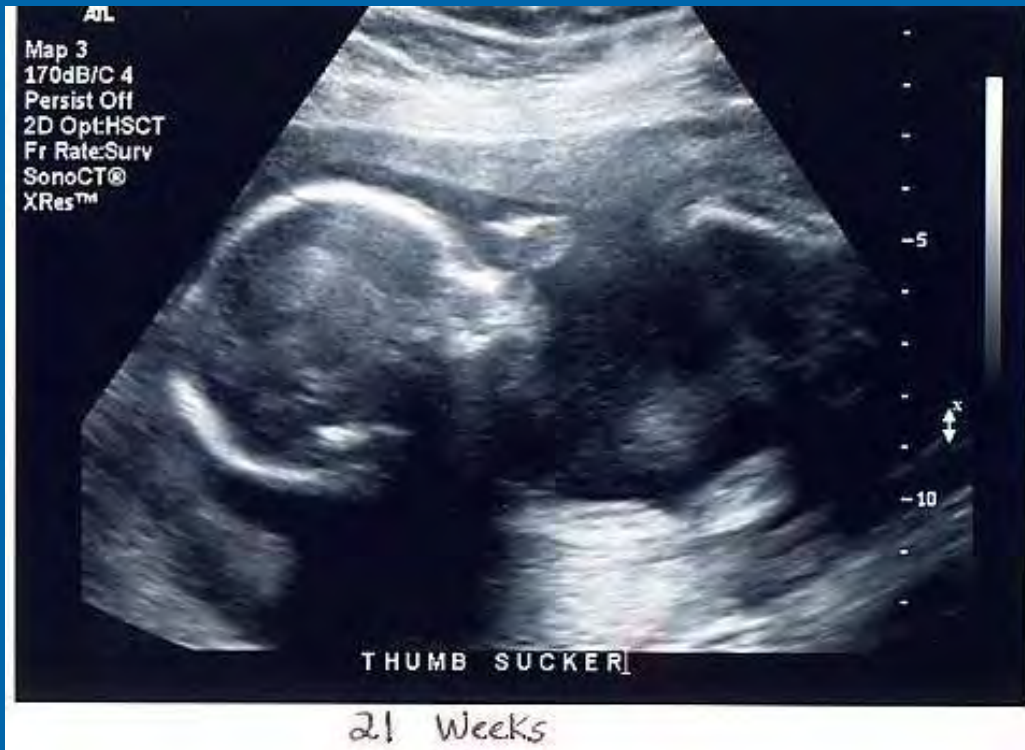


**Electric Drill - 1889**



**Race Cams - 1979**

# AUSTRALIAN INVENTIONS



**Ultrasound - 1961**



**Bionic Ear - 1982**

# AUSTRALIAN INVENTIONS



**Fridge - 1854**



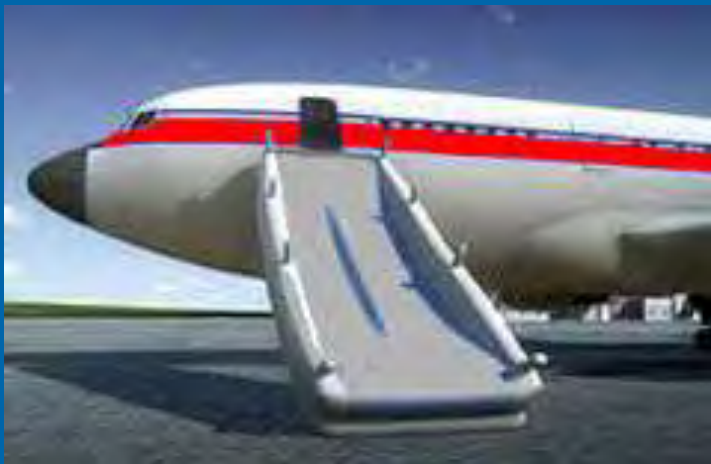
**Featured Movies - 1906**



# AUSTRALIAN INVENTIONS



**Flight Recorder - 1958**



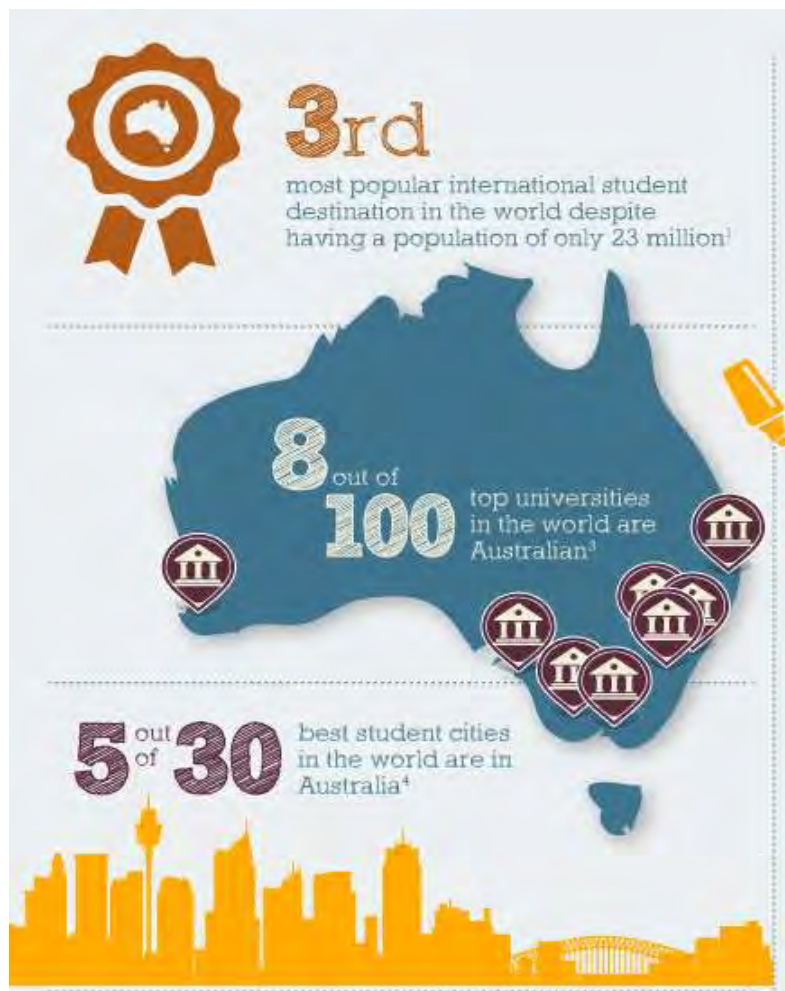
**Inflatable Slide - 1965**



**Plastic Bank Notes - 1988**



# Higher Education in Australia



**41 Universities in total**

	# Universities ranked in the top 100	# total universities in the country	%
Australia	5	41	12%
UK	11	116	9.5%
USA	44	2870 (4 year institutions)	1.5%



# Why study at Monash University?





# Reason 1

## Prestige & Reputation



# Overview

- Established in 1958, Melbourne
- Second oldest university in the state of Victoria and one of the largest and most international universities in the world
- Ranked among the top 70 universities in the world (QS, 2014 - 2015)
- Member of Australia's **Group of Eight (GO8)** and world-renowned for its excellence in teaching, learning, research and graduate outcomes



Sir John Monash





# Overview

- Australia's largest and more international university
  - 63,000 students across 8 campuses
  - over 22,000 international students from 146 countries
- Involved in student exchange programs with more than 130 universities in 25 countries (Latin America, Europe, Africa, Asia, Middle East and Oceania)
- Home to almost 100 discipline-specific research centres
- Ever-expanding global alumni network of more than 270,000 people around the world.

# Reason 2

## Our Global Network

Australia ■ Malaysia ■ South Africa ■ China ■ India ■ Italy

*Global reach, global reputation.*





# Australian Campuses



A stylized map of Australia is shown against a dark blue background. The landmass of Australia is white, while the surrounding oceans are a darker blue. A small rectangular area in the southeast, representing the state of Victoria, is highlighted in a lighter blue. A red location pin is placed within this highlighted area. Two blue labels with white text are present: 'Australia' is positioned in the upper left part of the white landmass, and 'Melbourne' is positioned directly above the red pin. The entire map is framed by a dark blue border.

**Australia**

**Melbourne**



## Reason 3

# Our World-Wide Ranking





# GLOBAL RANKINGS



67<sup>th</sup> (2015/2016)

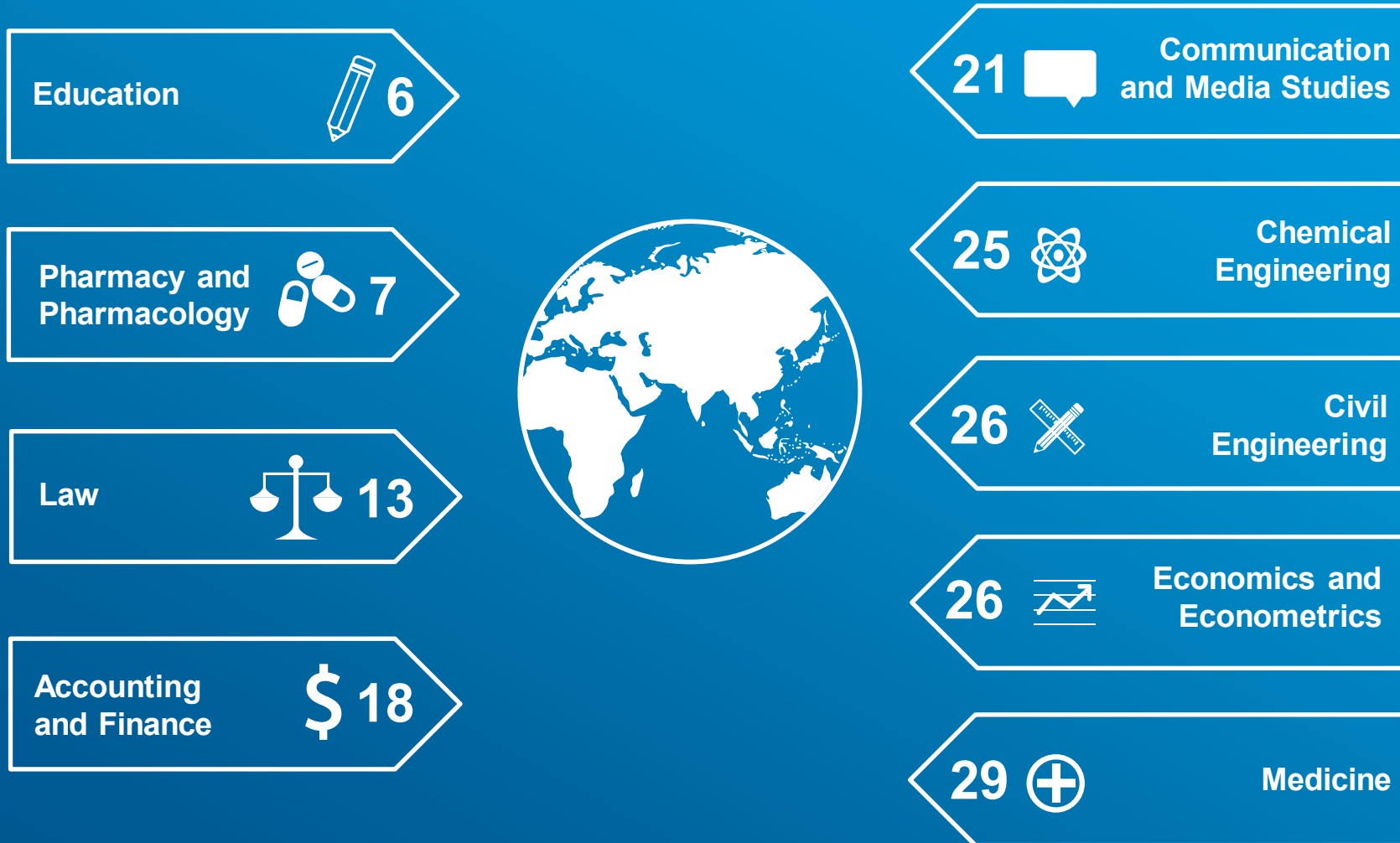


73<sup>rd</sup> (2015)



101-150 Band  
est : 115<sup>th</sup>  
(2015)

# A World Top 100 University



A total of 22 subjects ranked in the *top 50*

# Faculty of Business and Economics



Group  
of  
Eight  
university





# How do we rank with U.S, Canada & UK ?

University	Ranking^
University of Birmingham (UK)	64
University of Washington (U.S.A)	65
University of Sheffield (U.K)	69
<b>Monash University (Australia)</b>	<b>70</b>
The University of Nottingham (U.K)	77
Boston University (U.S.A)	78
University of Texas at Austin (U.S.A)	79
University of Montreal (Canada)	83
University of Alberta (Canada)	84

**^ QS World University rankings - 2014**

# Employment – The New York Times (2012 – 2015)



Monash *graduates* are placed #32 in the world.

**VOTED**

**#1**

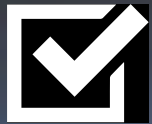
AUSTRALIAN UNIVERSITY FROM WHICH TO HIRE GRADUATES

# Reason 4: Our academic programs

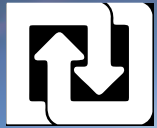


# Double degree, not double the time.

A double degree gives you:



**Choice**



**Flexibility**



**Opportunities**

**Monash has one of the largest ranges of double degrees on offer.**

- **All Monash University are internationally accredited**
- **More than 250 bachelor degree programs**
  - 170 single degrees **(3 – 5 years)**
  - 80 double degrees **(4 – 5 years)**
- **Over 330 postgraduate programmas**
  - Certificates **(6 months)**
  - Graduate Diplomas/Diplomas **(1 year)**
  - Masters by coursework or research **(1.5 – 2 years)**
  - Doctorates/PhDs **(3.5 – 4 years)**
- **Study Mode**
  - Full-time
  - Off-campus/on-line





# 10 Faculties – more than 780 programs

## Arts

Anthropology, Community Welfare, Criminology, Writing, Communications & Media, Environment, Journalism, Languages, Music, Politics, Psychology, Public Relations.

## Art, Design & Architecture

Architectural Design, Interior Architecture, Design, Industrial Design, Multimedia & Digital Arts, Fine Art, Visual Art.

## Business & Economics

Accounting, Banking & Finance, Law, & taxation, HR, Tourism, e-Business, Econometrics & Statistics, Economics, Finance, Int. Business, Management, Marketing.

## Education

Primary education, Early childhood, Early Childhood Studies, Sport & Outdoor Recreation, Adult Learning & Development

## Engineering

Chemical, Civil, Electrical & Computer Systems, Mechanical, Aerospace, Civil & Environmental, Computer Systems, Environmental, Mechatronics.

## Information Technology

Business Information Systems, Computer Science, Info.Technology (Software, Syst. Development, Hardware, Networking, Multimedia, Games), Software Engineering

## Law

Laws – Criminal, Commercial, Human Rights, Intellectual Property, International, Family, Insurance, Financial, Professional practice, Consumer credit, Communications

## Medicine, Nursing and Health Sciences

Medicine & Surgery, Midwifery, Nursing, Physiotherapy, Occ. Therapy, Health Science, Biomedical Science, Nutrition & Dietetics, Radiography & Medical Imaging, Paramedic.

## Pharmacy & Pharmaceutical Sciences

Pharmacy , Pharmaceutical Sciences

## Science

Biology, Chemistry, Biosciences, Psychology, Astronomy & Astrophysics, Atmospheric Sciences, Biochemistry, Genetics, Geography, Geosciences, Immunology, Mathematics, Microbiology, Plants Science ,Physics, Physiology, Zoology,.



# Reason 5: Our Academic Excellence



# Our Academics

- Monash has more than 3.800 academic staff recognised world-wide for their high-quality and innovation in their fields:
  - 1.712 teach and do research
  - 1.482 do research only
  - 568 teach only
- Our academic staff-student ratio is higher than the average Australian university, enabling students to receive more focus and attention.



# Reason 6: Our Research Capability



## A camera that swims in veins

Barely wider than a human hair, this example of leading-edge nanotechnology will cut surgical risk and save lives.

[Read more about our world-leading research.](#)

Research at Monash





# The Excellence in Research for Australia ERA Rankings

- The ERA initiative assesses research quality within Australia's higher education institutions using a combination of indicators and expert review by internationally-recognised experts.
- MONASH research fall under the following categories:
  - 3 – equivalent to world standards
  - 4 – above world standards
  - 5 – well above world standards

[www.arc.gov.au/era](http://www.arc.gov.au/era)

# The Excellence in Research for Australia ERA Rankings

Faculty	ERA Ranking
Art & Design ( <i>Arquitecture</i> )	3 – equivalent to world standards
Arts and Humanities	3 – equivalent to world standards 4 – above world standards
Sciences ( <i>physics, chemistry, mathematics, biology, geology, geosciences, atmospheric sciences</i> )	3 – equivalent to world standards 4 – above world standards
Law ( <i>commercial, intellectual property</i> )	4 – above world standards
Education ( <i>pedagogy, early childhood, secondary education</i> ) <i>primaria and</i>	4 – above world standards
Pharmacy and Pharmaceutical Sciences	5 – well above world standards
Engineering ( <i>civil, mechanical, electrical, environmental, structural, mechatronics</i> )	4 – above world standards 5 – Performance well above world standards
Medicine, Nursing and Health Sciences	4 – above world standards 5 – well above world standards
Business and Economy ( <i>marketing, international business, accounting, commerce, tourism, administration, human resources, MBA</i> )	3 – equivalent to world standards 4 – above world standards
Information Technology	3 – equivalent to world standards

# Research with impact

## ■ Health and Wellbeing

- [Neuroscience](#)
- [Cancer](#)
- [New therapeutics](#)
- [Public health](#)
- [Accident, injury and trauma](#)
- [Stem cells and regenerative medicine](#)
- [Women's, children's and reproductive health](#)
- [Immunology and infectious diseases](#)





# Research with impact

## ▪ Future Technologies

- [Advanced manufacturing](#)
- [Aerospace](#)
- [Nanomaterials](#)
- [Energy related materials](#)

# Research with impact

## ▪ Sustainable Environments

- [Green Chemistry](#)
- [Sustainability](#)
- [Urban water](#)
- [Energy](#)
- [Climate change and weather](#)



# Research with impact

## ▪ Resilient Cultures & Communities

- [Education](#)
- [Economic modelling](#)
- [Mental health law](#)
- [Development economics](#)
- [Cultural heritage](#)
- [Health, wellbeing and social change](#)



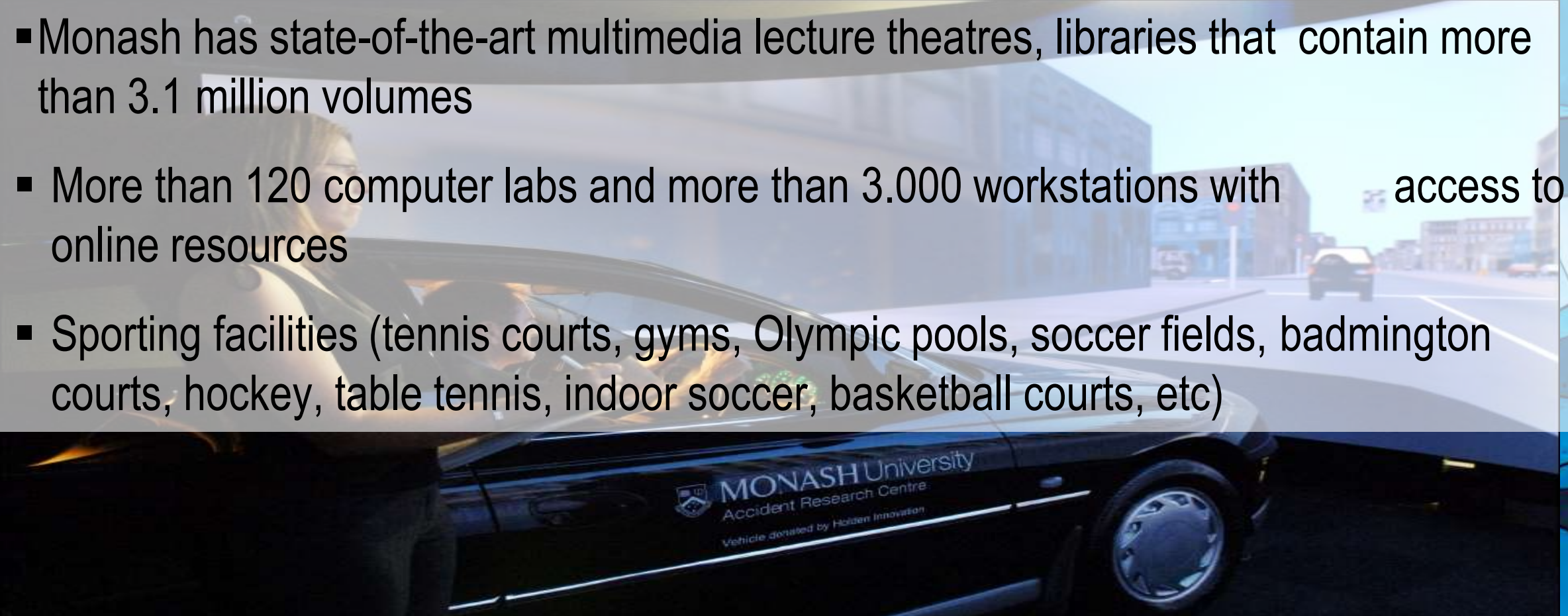


## Reason 7: Our outstanding facilities



# On-campus facilities

- Monash has state-of-the-art multimedia lecture theatres, libraries that contain more than 3.1 million volumes
- More than 120 computer labs and more than 3.000 workstations with access to online resources
- Sporting facilities (tennis courts, gyms, Olympic pools, soccer fields, badminton courts, hockey, table tennis, indoor soccer, basketball courts, etc)





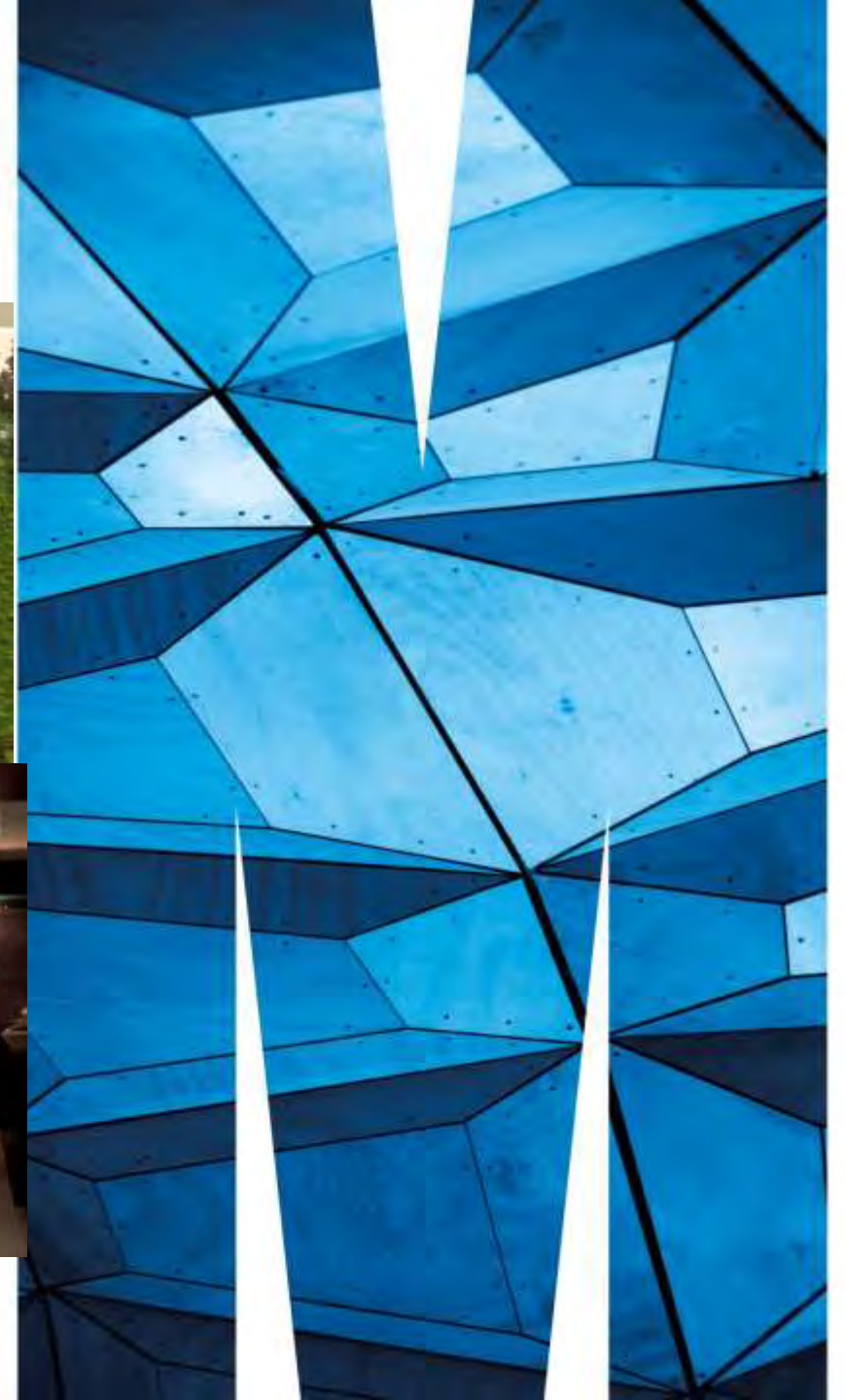
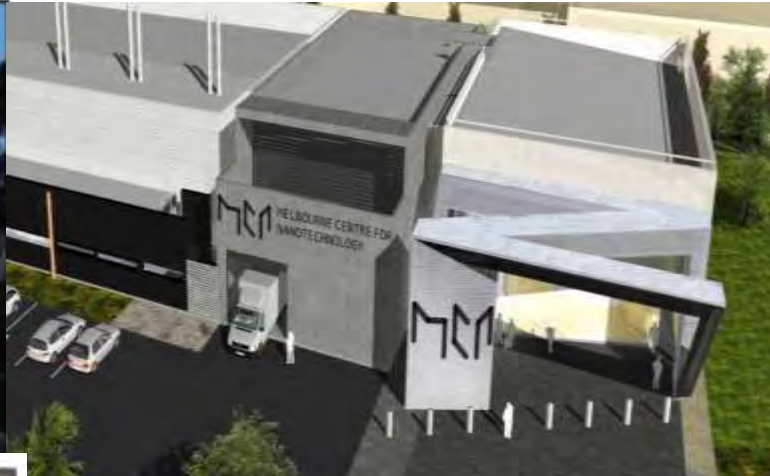
## Research facilities

- The largest wind tunnel in the southern hemisphere
- A world-class wave tank which simulates the action of any large body of water
- Microscope and microanalysis equipment
- Multimillion dollar communications and power laboratories equipped with commercial systems and best-in-class instrumentation
- Australian Synchrotron & Melbourne Centre for Nanofabrication





# Monash Large Scale Research Platforms





**The New Horizons  
Faculty of Engineering**

**The Monash CAVE2 is a next-generation immersive  
hybrid 2D and 3D virtual reality  
environment**





# Monash Large Scale Research Platforms

- 
- **Builds upon unique Green Chemistry capability and Chemistry and Chemical Engineering ranked in world's top 50**
    - Expand industry's pollution and waste prevention toolkit
    - Accelerate development of sustainable products/processes
    - Expand 'green workforce' and training programs
    - Drive towards zero environmental impact businesses
    - Scientifically inform the industry and policy makers
    - Leverage local and international networks for R&D



## Reason 8: Our Student Life and Support



# Our Student life and support



## Life @ Monash

- [Monash events](#)
- Clubs and societies
- Sport and recreation
- Student associations
- Financial support



## Student services

- [Accommodation](#)
- [Monash good food guide](#)
- [Childcare](#)
- [Library](#)
- [Safety and security](#)



## Health & Wellbeing

- [Health services](#)
- [Counselling](#)
- [Spirituality](#)
- [Disability support](#)
- [Equity and diversity](#)

# Applying to Monash University

- **Entry requirements**





# How to apply to Monash University

Attestat o (polnom) Srednem Obshchem Obrazovanii  
**Final Results**

**1<sup>st</sup> Year**

**Monash University**  
**(10 Faculties/schools)**

**2<sup>nd</sup> Year Monash University**

**3<sup>rd</sup>, 4<sup>th</sup> or 5<sup>th</sup> Year Monash University**

# Entry requirements

## 1. Academic Requirements

- Russian students with **Attestat o (polnom) Srednem Obshchem Obrazovanii final results**
- Scores vary from program to program
- **Arts and Humanities** = 3.3 – 4.05
- Art Design and Architecture = 3.3
- Business and Economics = 3.3 – 4.5
- Engineering = 4.2
- I.T = 3.6 – 3.9
- Education = 3.75
- Law = 4.7
- Medicine = 5.0
- Science = 4.375 – 4.5
- Pharmacy and Pharmaceutical Sciences = 4.0 – 4.5

# Entry requirements

## 2. English Requirements :

Satisfying the minimum English language requirements of the University.

For applicants whose secondary schooling was not entirely in English, these requirements can be met in one of the following ways:

- IELTS test ^ : 6.5 overall and 6.0 each band
- TOEFL test (Paper-based or iBT) ^
- Cambridge certificates in English – CAE or CPE
- ✓ Each Monash University course has a required level of language proficiency
- ✓ ^ Students must have undertaken an English language proficiency test within 24 months prior to their study commencement date



# Entry requirements

## 2. Specific course admission requirements

As well as satisfying the minimum entry requirements outlined in **points 1 and 2**, applicants must satisfy any specific course entry requirements to be eligible for selection.

- Artwork folio – Art Design and Architecture
- Maths and High level Maths – Business and Economics, IT
- Chemistry and Physics – Engineering
- Maths, Biology, Physics, Geography – Science and Pharmacy
- Chemistry and ISAT test – Medicine

# How much do you need? (Budget)



## On-campus accommodation

<b>Student residencies:</b> <b>Clayton, Berwick, Gippsland or Peninsula</b>	Aproximately Expenses	
	Monthly	Annual
Application fees	-	A\$65
Accommodation fees during academic year (40 - 43 weeks)	A\$896	A\$8,955
Telephone and Internet connections fees (43 semanas)	A\$35	A\$365
Books, stationary and equipment	-	A\$500
Overseas Student Health Cover (OSHC)	-	A\$380
Halls of Residence meals	A\$480	A\$4,800
Miscellaneous – entertainment and personal items (optional)	-	A\$2,500
Clothing (optional)		A\$960
<b>TOTAL YEARLY COST + optional expenses</b>	-	<b>A\$19,025</b>



## New Student Residencies - Clayton

**Bedroom**



**Toilet**



**Kitchen**



**Dinner table and  
desk**

# Off-campus accommodation

Renting/sharing and apartment with two other people	Approximate costs	
	Monthly	Yearly
<b>Bond (one month's rent).</b> You will get it back if the property is returned in the same condition as it was leased		A\$600
Rent x academic year - <b>(40 - 43 weeks)</b>	A\$700	A\$7,000
Books and other study materials		A\$300
Overseas Student Health Cover (OSHC)		A\$380
Travel - Public transport (bus, train, tram)	A\$115	A\$1,859
Food, electricity, water, gas, internet, phone	A\$300	A\$3,600
<b>Miscellaneous</b> - entertainment, personal expenses		A\$2,500
<b>Clothing and accessories</b>		A\$960
<b>Furniture, kitchen and toilet appliances, etc</b>		A\$1,000
<b>TOTAL YEARLY COSTS + Optional expenses</b>		<b>A\$18,199</b>

## **Student visa**

As an international student you are entitled to:

- Study full time in Australia
- Work 40 hours fortnightly and full time during university holidays
- Travel during holidays

## **Post Study Work**

- 2 years being considered for applicants with a Bachelors and Master by Coursework University degrees.
- 3 - 4 years for Masters by Research or PhDs respectively
- Changes expected to commence from Early 2013.



# SCHOLARSHIPS

Undergraduate and Postgraduate programs by Coursework



# MONASH University – Scholarships to International Students

Scholarship	Monash International Leadership Scholarship	Monash International Merit Scholarship
Number available	4 a year	35 a year
Value in AUD\$	<ul style="list-style-type: none"> <li>100% course fees* paid until the minimum number of points for your degree are completed</li> <li>Excludes OSHC, accommodation and living costs.</li> </ul>	<ul style="list-style-type: none"> <li>\$10,000 for a full time study load (48 credit points) paid per year (Total average value of up to \$50,000 (based on a 5 year degree))</li> <li>Excludes OSHC, accommodation and living costs.</li> </ul>
Programas	<ul style="list-style-type: none"> <li>Bachelor degrees</li> <li>Graduate diplomas (coursework)</li> <li>Masters (coursework)</li> </ul>	<ul style="list-style-type: none"> <li>Bachelor degrees</li> <li>Graduate diplomas</li> <li>Masters by coursework</li> </ul>
Conditions	<ul style="list-style-type: none"> <li>Based on academic achievement</li> <li>Students must maintain a distinction average (70% or above) each semester</li> <li><b>Does not apply for the following programs:</b> <ul style="list-style-type: none"> <li>✓ Bachelor of Medicine / Bachelor of Surgery (MBBS)</li> <li>✓ Master of Business Administration (MBA)</li> <li>✓ Students in Monash Pathway programs (eg Monash College and Monash University Foundation Year)</li> <li>✓ Students transferring from another Monash campus or applying to Monash from another Australian University</li> <li>✓ Students studying Australian Year 12*</li> </ul> </li> </ul>	<ul style="list-style-type: none"> <li>Based on academic achievement</li> <li>Students must maintain a distinction average (70% or above) each semester</li> </ul>
Selection rounds	<ul style="list-style-type: none"> <li><b>Semester 1 &amp; 2, 2015:</b></li> <li>✓ Every month</li> </ul>	<ul style="list-style-type: none"> <li><b>Semester 1 &amp; 2, 2015:</b></li> <li>✓ Every month</li> </ul>

	Art Design & Architecture	Business and Economics		Information Technology		Medicine, Nursing and Health Sciences	Engineering	Pharmacy	Science
Amount (AUD \$)	\$4,000 Study Grant One-off payment as tuition deduction.	\$5,000 Study Grant One-off payment as tuition deduction	\$10,000 (MBA) Study Grant One-off payment as tuition deductio	\$5,000 a year Scholarship	\$7,000 a year Scholarship	\$4,000 Study Grant One-off payment atuition deduction	\$6,000 Study Grant One-off payment as tuition deduction	\$4,000 Study Grant One-off payment as tuition deduction	\$4,000 Study Grant One-off ayment as tuition deduction
Programs	All Undergraduate (bachelors) and Postgraduate programs	All bachelor Degrees (except Bachelor of International Business (2 year duration))  All masters by coursework	MBA (3 years work experience)	<u>Bachelors:</u>  Business Information Systems  Computer Science  Software Engineering  Information Technology and Systems  <u>Masters:</u> Business Information Systems Business Information Systems (Professional) Information Technology	<u>Bachelors:</u>  Business Information Systems  Computer Science  Software Engineering  Information Technology and Systems <u>Masters:</u> Business Information Systems	<u>Bachelors:</u>  Health Science Psychology (Honours) Nutrition Science (excludes credit exemption into UG programs) <u>Masters:</u> Nursing Practice Public Health	<u>Master Advanced Engineering in:</u> Chemical Engineering Civil Engineering (water) Civil Engineering (Transport) Electrical Engineering Materials Engineering Mechanical Engineering	<u>Bachelors:</u>  Pharmaceutic al Science  Pharmacy (Honours)  Pharmacy (Honours, Scholars program)  Pharmaceutic al Science Advanced with Honours	Bachelor Science  Bachelor of Science (Advanced)
No	Unlimited	200	12	Unlimited	Unlimited	Unlimited	Unlimited	Unlimited	50
country	Russia	Russia		Russia		Russia	Russia	Russia	Russia



# Why Melbourne ?





# Overview

- Capital of the State of Victoria
- World's most liveable city (Economist Intelligence Unit, 2011)
- Safety
- Cafes & restaurants
- Health systems
- Environment
- Education (9 out of 39)
- Infrastructure (transport, roads, venues)
- Arts, sports and Cultural events



## ➤ **Multicultural Society**

- Over 50,000 international students from more than 140 countries
- 45% of Victoria's 4 million people were born overseas or at least have one parent born abroad.
- More than 150 languages are spoken in Victoria

## ➤ **Sporting capital of Australia**

- Formula 1 Grand Prix
- Moto Grand Prix
- The Australian Tennis Open
- Soccer, AFL and Rugby
- Rip Curl Surf circuit
- Melbourne Cup and
- International Test Cricket



# “Ranked the *world’s most liveable city*”

The Economist Intelligence Unit 2013, 2012, 2011

Ratings are based on:



Stability



Environment



Health care



Education



Culture



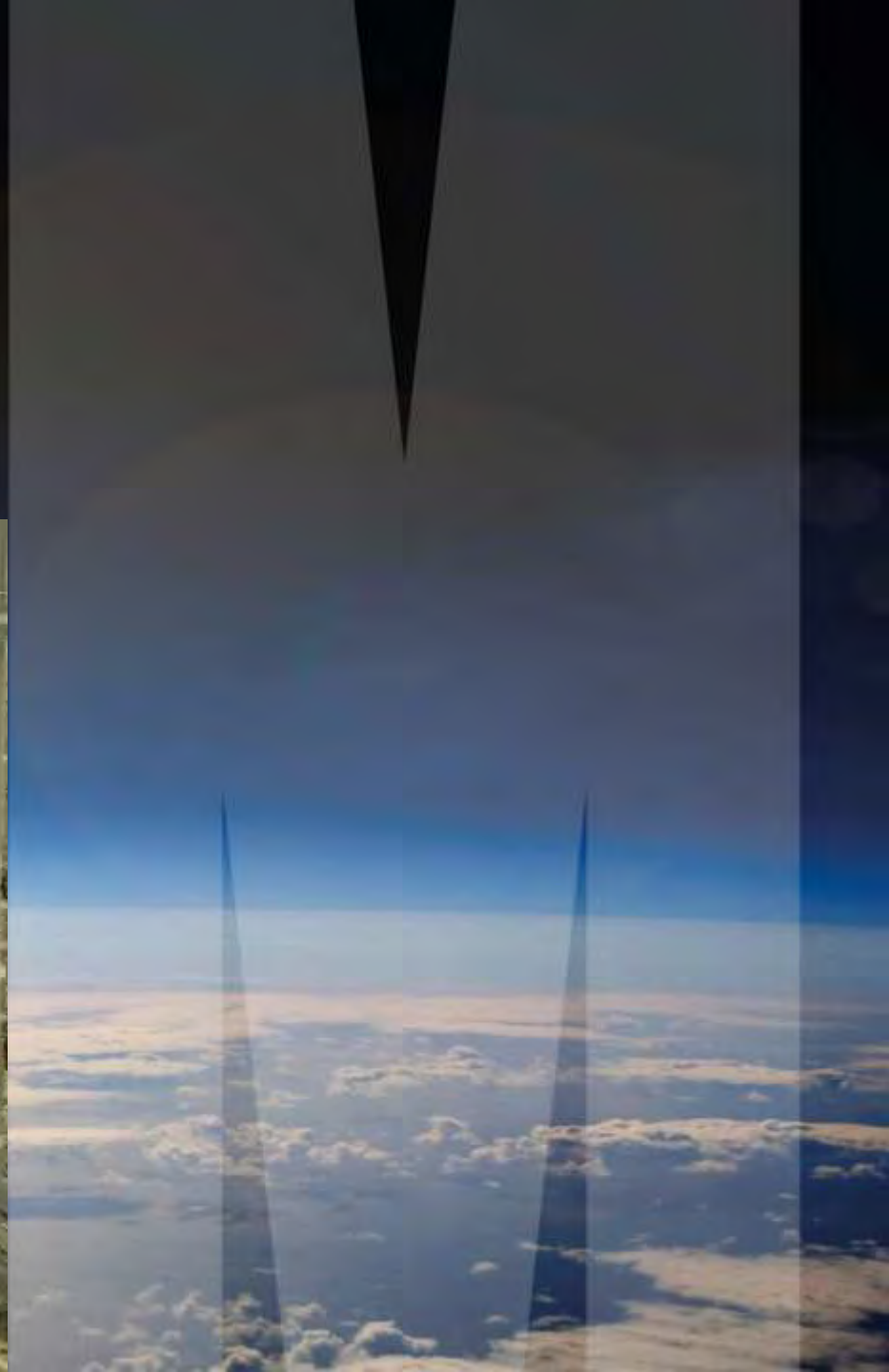
Infrastructure

and here's why.....



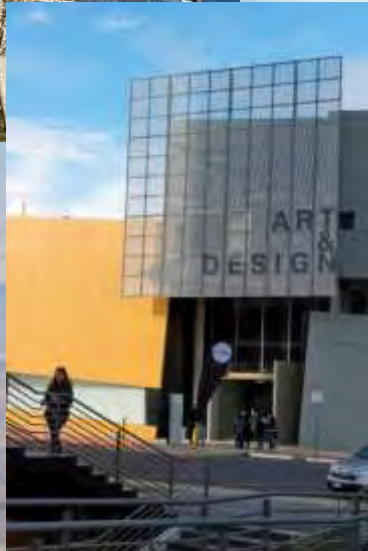


# Caulfield campus





# Caulfield campus





# New Caulfield – July 2015





# Clayton campus





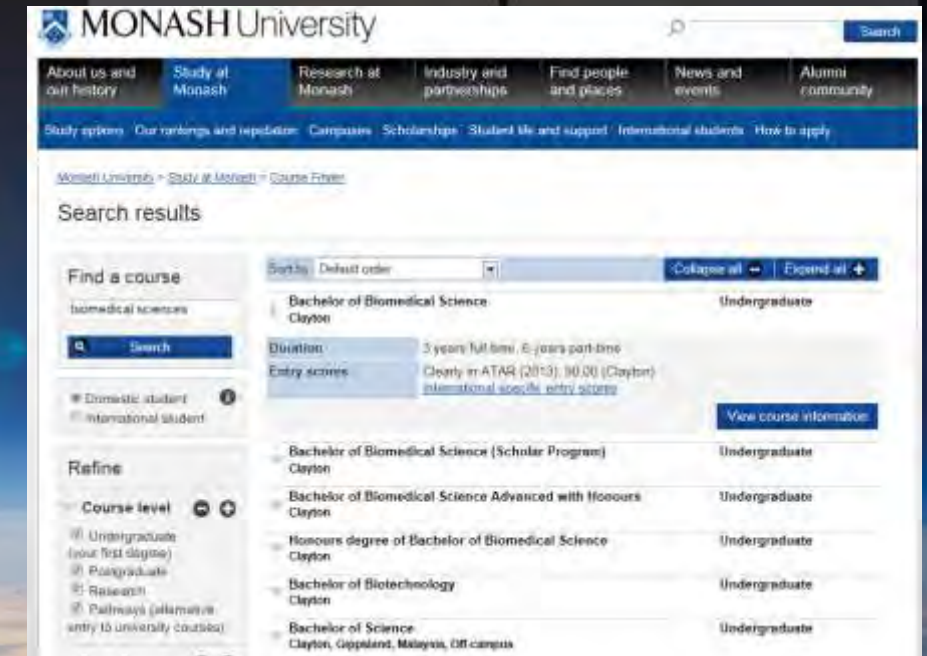
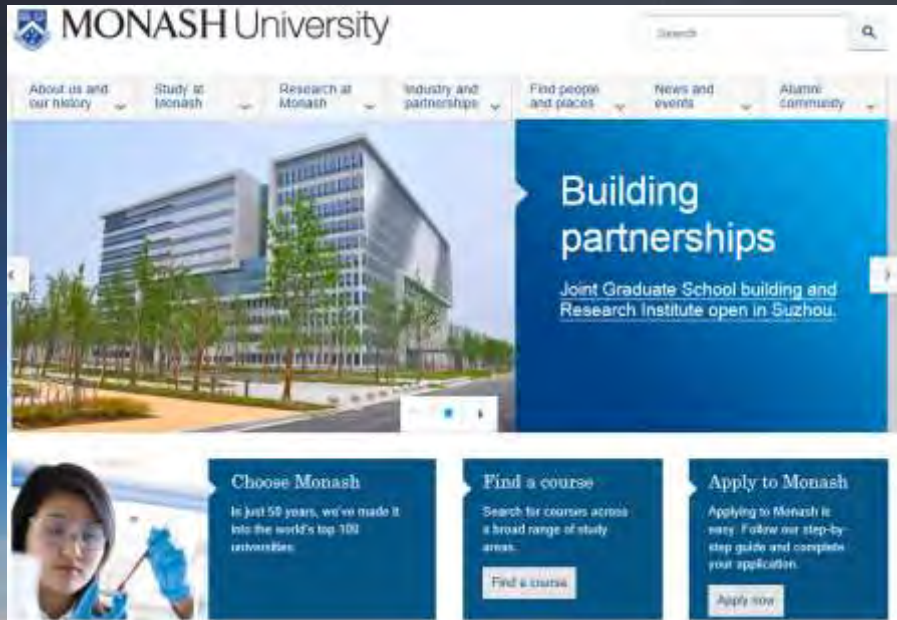
# Clayton campus





# ¿More information?

➤ Monash University - [www.monash.edu](http://www.monash.edu)







**MONASH**  
University



GROUP  
OF EIGHT  
AUSTRALIA

THANK YOU!!