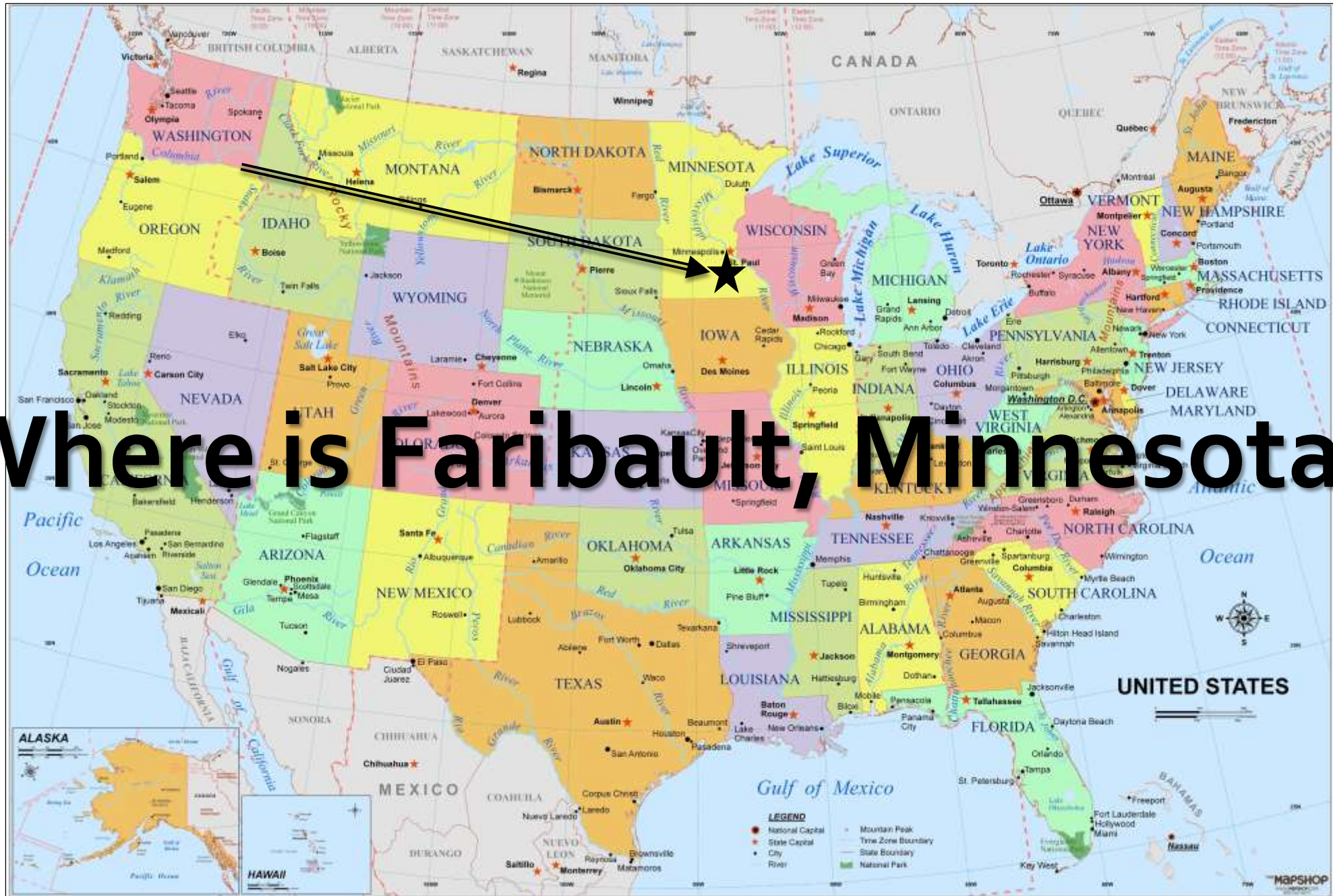


ALL IN

SHATTUCK ♦ ST. MARY'S

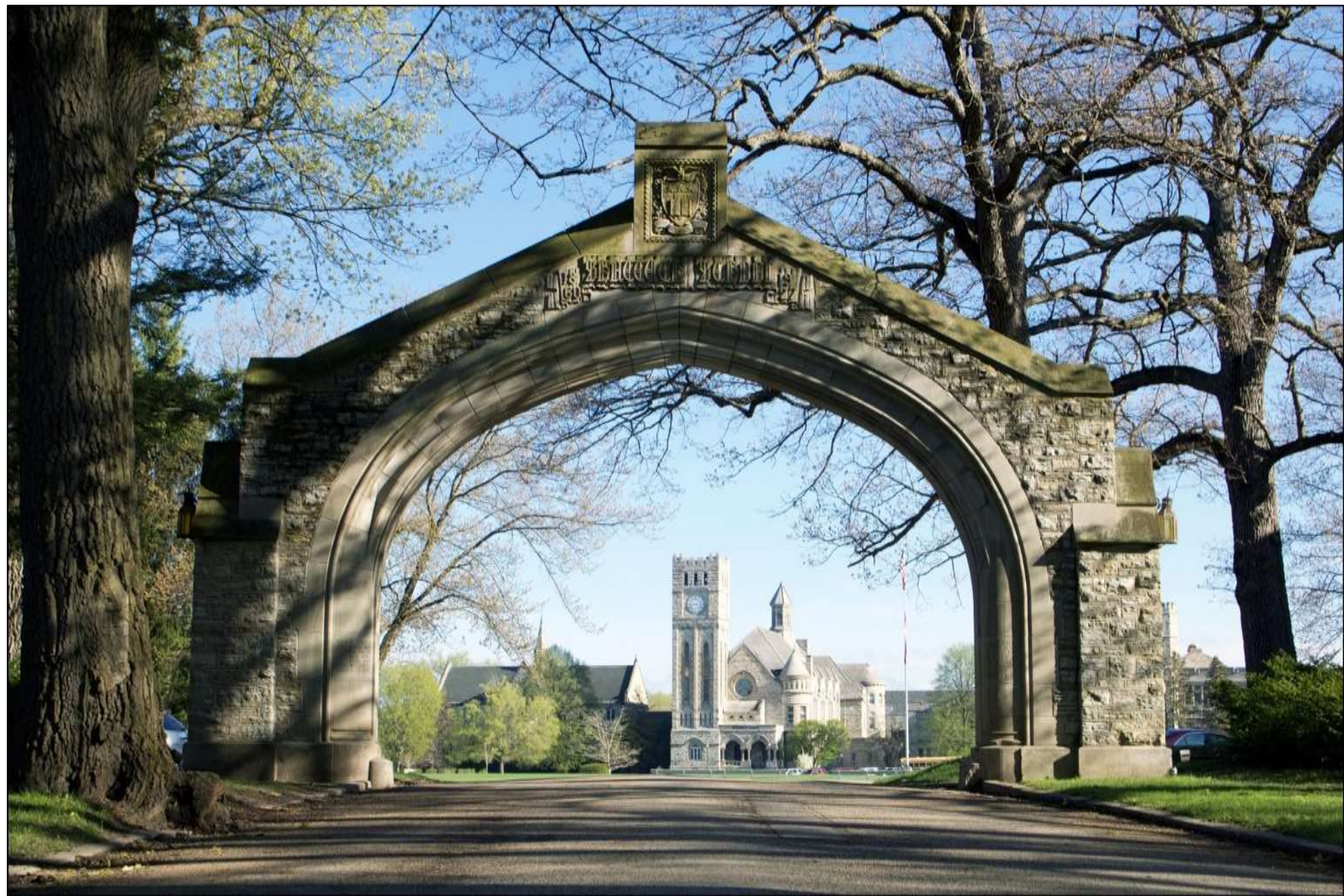
Where is Faribault, Minnesota?



2017-2018 Student Body: 488





















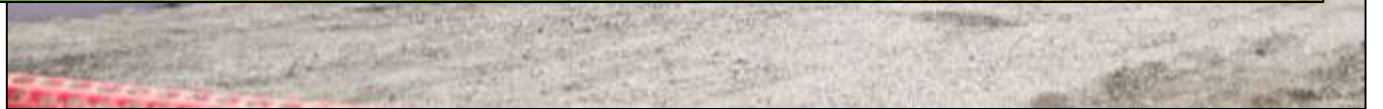














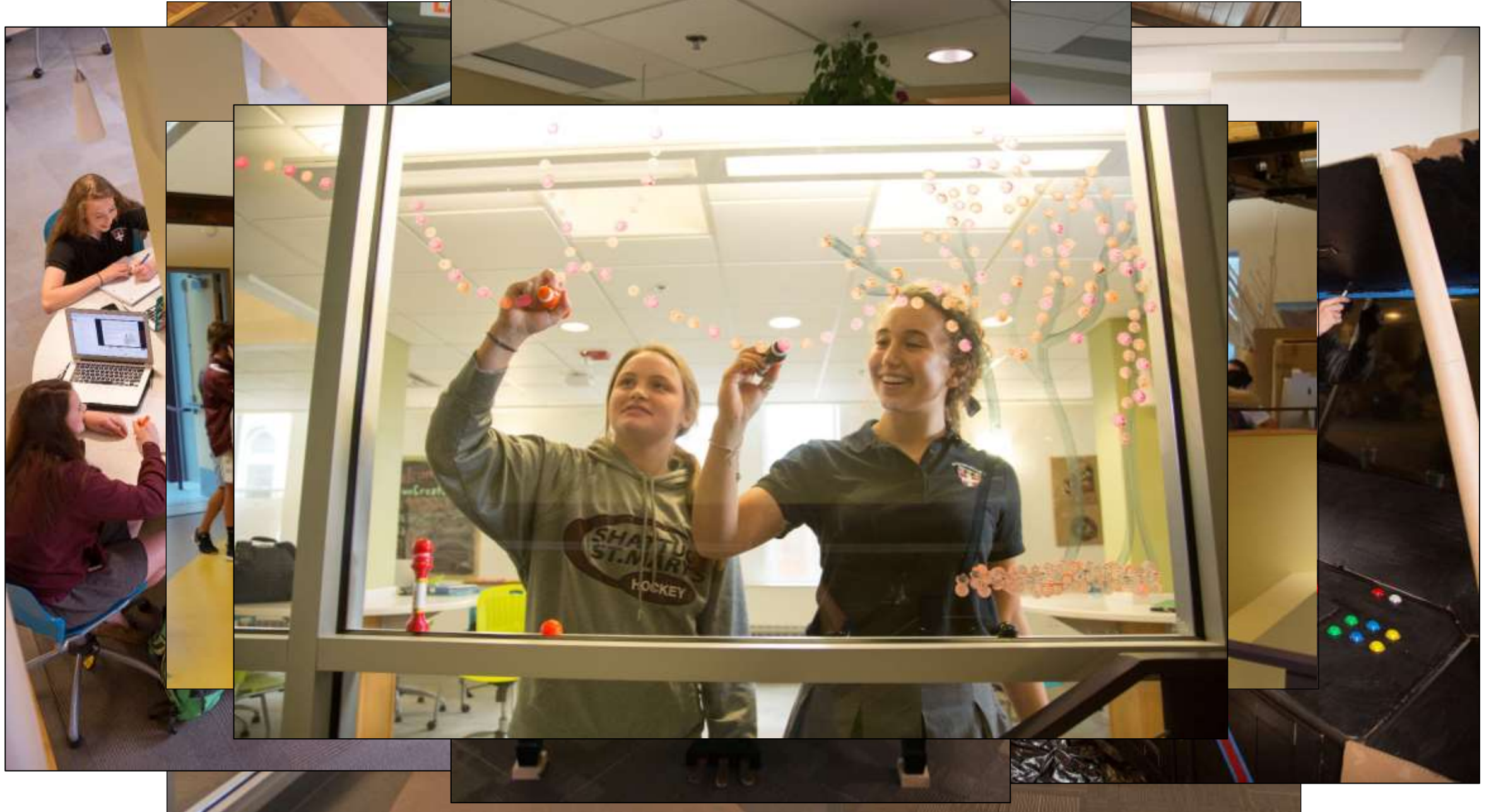
SHATTUCK-ST. MARY'S



CUNNINGHAM
GROUP







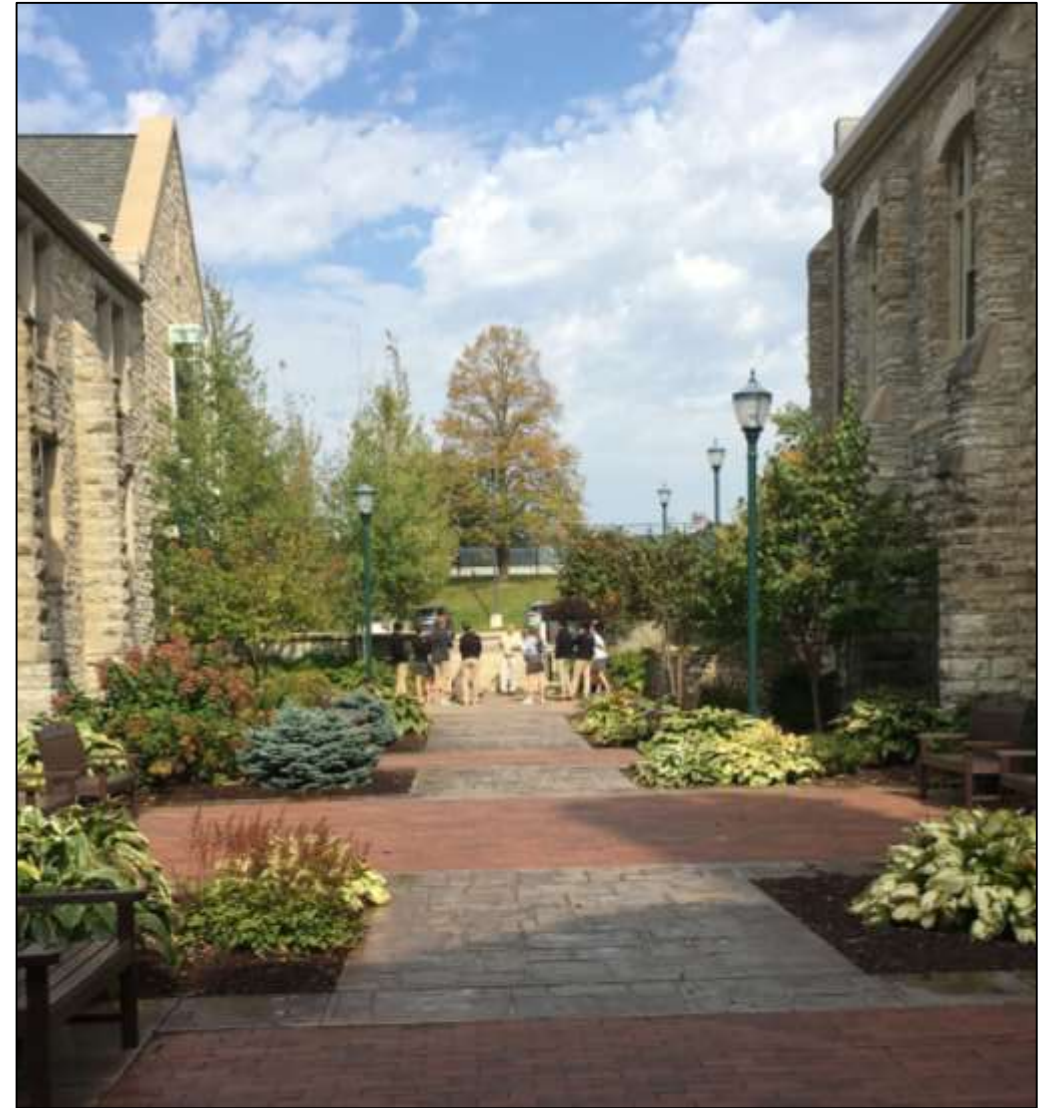
scholar
SHIFT
at Shattuck-St. Mary's
initiative...independence...innovation...intellectual curiosity

1. Students create their own academic path through a combination of classroom time, focused teacher support, peer collaboration, and online technology. *Students own their education.*
2. Students develop the independence and self-management skills to be successful in college. *College prep at its best.*
3. Students have time to explore new areas of interest through internships, guided research projects, community service work, or exploration in our weCreate Center. *The sky's the limit!*



Modules

- **Asking Why: Exploring the world beyond the Arch**
 - **Exploring Self: Reflecting on who you are as people as learners and as leaders**
 - **Learning How: Developing New Skills and Talents**
 - **Developing Creativity: Exploring the opportunities in weCreate**
- Facing It: Traveling Vietnam Wall
 - Election USA 2016
 - 75 years at the Walker Art Center
 - Creating an iBook - An Intro to iBooks Author
 - 5 Hour Soundscape Challenge
 - Lowering your Ecological Footprint
 - Intro to Garage Band
 - Bodies in Motion
 - 5 Hour Film Challenge
 - Camera 1, Take 1: An Intro to Sports Broadcasting
 - Minneapolis Architecture
 - Exploring the Culture and Food of the Hispanic World
 - What is the Universal Declaration of Human Rights?
 - Creative Memoir and *The House on Mango Street*



Centers of Excellence

Centers of Excellence support the ambitions of young people to their passions by providing an environment that integrates the rigors of a challenging academic course of study with the demands of pursuing a particular talent in academics, arts or athletics. We currently offer these Centers of Excellence:

**Bioscience, Engineering, The Major,
Figure Skating, Golf, Hockey,
Pre-Conservatory Music, Boys Choir,
Soccer, and Vocal Performance.**

























College Matriculation 2012-2017

Boston College, Boston University, Bowdoin College, **Brown University**, Bucknell University, **Carleton College**, Carnegie Mellon, Cleveland Conservatory, Colgate University, Colorado College, Cooper Union, **Cornell University**, Dartmouth College, **Duke University**, Franklin College, George Washington University, **Georgetown University**, Georgia Institute of Technology, Grinnell College, Hamilton College, **Harvard University**, Johns Hopkins University, **Juilliard School**, Manhattan School of Music, Middlebury College, **New York University**, Northeastern University, **Northwestern University**, Oberlin College, **Princeton University**, Purdue University, Rhode Island School of Design, San Francisco Conservatory, Santa Clara University, **Savannah College of Art and Design**, Skidmore College, Smith College, St Olaf College, Syracuse University, Trinity College, Tufts University, US Air Force Academy, US Military Academy, US Naval Academy, **UC Berkeley**, UC Irvine, UCLA, University of Michigan, **University of Pennsylvania**, University of Victoria, Universidad Politecnica de Cataluna, **Vanderbilt University**, Wellesley College, Williams College, **Yale**

University



How to apply:

- 1. First – Inquire!**
- 2. Online application**
- 3. Student & Parent Questions**
- 4. Grades**
- 5. Testing (SSAT or TOEFL)**
- 6. Teacher Recommendations**
- 7. Interview**



SHATTUCK ♦ ST. MARY'S

Contact

Andrew Garlinski '98

- Director of International Recruitment
- Director of ESL
- Andrew.Garlinski@s-sm.org
- (507) 333-1543
- Skype: SSM ESL

ALL IN

SHATTUCK ♦ ST. MARY'S